

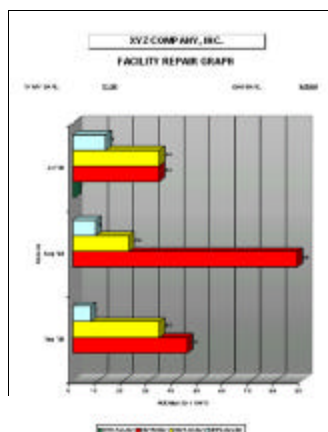
# Trapbase<sup>XP</sup>

Trapbase<sup>XP</sup> is the industry's choice for state-of-the-art relational steam system management software.

Trapbase<sup>XP</sup> is a steam trap tracking relational database system and field tool designed to assist industrial and commercial facilities in developing and maintaining a systematic steam system survey program. This time-saving software will organize your team's efforts in effective steam system survey, maintenance, and repair

FDSI can **import existing data** into Trapbase<sup>XP</sup> from other software, Microsoft Excel, dbf files, text files, comma delimited files, etc. Trapbase<sup>XP</sup>'s drop down menus, auto-fill, and point-and click action makes data entry and retrieval easy!

Trapbase<sup>XP</sup> maintains all old survey data regarding steam traps including ALL old surveys, master data, maintenance data, and repair data. Trapbase<sup>XP</sup> also tracks leaks associated with the steam trap station and calculates losses for these leaks as well as losses for make up water.



Trapbase<sup>XP</sup> Report Generator provides financial analysis as well as comprehensive summaries, and detailed reports of steam system survey, maintenance, and repair activity including potential and actual savings in lost steam, leaks related to the steam trap station, as well as make-up water costs. Use standard reports or custom queries in Trapbase<sup>XP</sup> Report Generator for a true picture of net profit through enhanced steam system management.



For steam losses through failed open trans Trapbase<sup>XP</sup> Report Generator

# Trapbase<sup>XP</sup>

## SYSTEM REQUIREMENTS

- ? IBM or compatible Pentium Computer
- ? Windows 95/98/ME/XP/NT
- ? 16MB RAM (32 Recommended)
- ? 2X CD-Rom Drive (4X or greater recommended)
- ? SVGA Monitor
- ? Printer (Color Recommended)

## FEATURES

- **Easy Data Entry** - auto-fill, pull down menus, user defined fields, record undo, and record copy
- **Complete History** – tracks all old survey, maintenance, and repair data within the database. No need to “re-load” old surveys from diskettes!
- **Customize for Your Facility** – customize all drop down lists, steam costs, and make up water costs
- **Comprehensive Reporting** – directed surveys, repair reports, performance reliability graphs, usage reports, maintenance summaries, reports, and graphs, steam loss calculations and Much Much More!
- **Point -and Click Exporting and Email** – exports most reports to Microsoft Excel, Microsoft Word, dBase and more! You can then customize reports or even eMail them to others... all at the click of a button!
- **On-Line Help** – Press F1 at any point for comprehensive online help!
- **Savings Results Analysis** – detailed financial data for steam system losses and maintenance costs. TrapbaseXP also tracks leaks associated with the steam trap station and calculates losses for these leaks as well as losses for make up water.
- **Incomplete Maintenance** – tracks incomplete maintenance due to shut-downs, etc. for repairs at a later time.
- **Maintenance Work Orders/History** – print maintenance work orders or a repair report, including ALL old survey and maintenance history all at the click of a button!
- **Field Data Analysis** - performance, model, manufacturer, repair, cost, etc. For steam losses through failed open traps, TrapbaseXP calculates losses for each individual trap by pressure, orifice size, and percent failed open. No other software offers the ease-of-use, variety of reporting, accuracy of steam loss calculations, or includes data for leak and make up water losses.



# TrapTech<sup>XP</sup> Palm PC

The TrapTech<sup>XP</sup> Palm PC is tough enough for use in manufacturing and industrial environments; its ruggedized housing withstands drops of up to 4 ft/1.2 m to concrete. The unit is tested to IP54 standards for protection against the elements like rain and dust, so it can be used outdoors on loading docks and yards and, because it uses a 650nm laser diode, you will still see the scan beam even in bright sunlight!

A high-contrast, anti-reflective liquid crystal display makes data easy to read even in low light or outdoors. A rechargeable lithium ion battery and optional multi-slot cradle configurations assure flexible convenience and strong performance no matter how intensive the task.



## Physical Characteristics

Size	1 in. H x 3 <sup>5</sup> / <sub>8</sub> in. W x 7 in L 25.4 mm H x 92 mm W x 177.8 mm L
Weight including battery:	Batch version: 10.3 oz . 288 gm Wireless Version: 1.8 oz. / 330 gm
Drop Specification	4 ft / 1.2 M to concrete
Battery	2.7V, 1400mAh rechargeable Lithium Ion
Environment Sealing	IP5 (windblown dust and rain)
Operating Temperature	-20° to 50° C -4° to 122° F
Storage Temperature	-25° to 50° C -13° to 122° F
Humidity	5% to 90% RH non-condensing
ESD	8KVdc air, 4KVdc contact
SE900 Scan Engine	Laser Class, CDRH Class II, IEC925-1/EN60825-1 Class I
Laser Source	Visible laser diode at 650 nm

# TrapTech<sup>XP</sup> Palm PC



The TrapTech<sup>XP</sup> Palm PC Pocket-Sized Workstation is a hand-held field computer with barcode scanner which seamlessly integrates with the Trapbase<sup>XP</sup> software.

The TrapTech<sup>XP</sup> is tough enough for use in manufacturing and industrial environments. Its rugged housing can withstand drops of up to 4 ft/1.2 m to concrete. The unit is tested to IP54 standards for protection against the elements like rain and dust.

A high contrast, anti-reflective liquid crystal display makes data easy to read even in low light or outdoors. A rechargeable lithium ion battery and single-slot cradle configuration assure flexible convenience and strong performance no matter how intensive the task.

Multiple traps with similar information can be quickly entered and surveyed due to TrapTech<sup>XP</sup>'s unique add-a-trap functionality. These features can radically reduce data entry time.

## Features

- ✍ **Convenient Size** – fits easily into your pocket!
- ✍ **Touch Screen/Pen Stylus** – for point-and-click ease in the field
- ✍ **Bar Code Scanning** – for accelerated steam trap follow-up surveys
- ✍ **Customize Pick-Lists** – for use in the field and download from Trapbase<sup>XP</sup> to virtually eliminate any typing in the field.
- ✍ **Upload Survey Data** – upload survey data in minutes eliminating data entry at the PC!
- ✍ **Field Editing** – Add and Modify Trap Information
- ✍ **Random Surveys** – when used with bar code tags,
- ✍ **Rechargeable Lithium Battery** – work all day with no fear of data loss!



# FDSI Barcode Tags

FDSI Barcode Tags stand up to the harshest plant environments – anodized aluminum with Teflon<sup>???</sup> coating resists paint, most chemicals, sunlight (UV), solvents and heat to 500°F.



Built for long life, this tag has Teflon coating to resist corrosion.

Tailored to your requirements – all legends, barcodes and human readable feature variable print. You can also get a fixed custom message, warning or logo added to all tags. Custom Sizes also available



Teflon<sup>®</sup> coated anodized aluminum barcode tags can tackle even the toughest, dirtiest jobs.

By using FDSI Barcode Tags, you will optimize the technician's function in the field thereby reducing overall cost of program



# Raynger? ST Pro Laser Thermometer



**Raynger® ST™ Pro and ProPlus  
Accurate temperature reading in less  
than a second!**

Lightweight, compact, and easy to use, the Raynger ST can safely measure hot, hazardous, or hard-to-reach materials without touching, contaminating, or damaging the material's surface.

Speed, accuracy, convenience, and durability are what made the Raynger ST Series noncontact thermometers the leader in portable IR temperature measurement.

ST80 ProPlus: 8 point circular laser, high/low alarm, MAX, MIN, DIF, and AVG temperature settings, and a temperature range of -32 to

760°C (-25 to 1400°F) and optics that allows the user to measure smaller objects from farther away. This is great news for HVAC or facilities maintenance professionals who need to measure ceiling and duct temperatures from a distance. It also has adjustable emissivity, and a D : S ratio of 50 : 1.

Temperature Range: -32 to 760°C (-25 to 1400°F)

D:S (Distance to Spot size): 50:1

Laser Sighting: 8 point

Emissivity: adjustable

Accuracy: ±1%

Response Time: 500 mSec

MAX, MIN, DIF,

and AVG Temperatures: All

Recall Last Reading: Yes

HI/LO Alarm: Yes

Protective Hard Case: Yes

**ST80 (NON-IS) \$449.00**

**ST80-IS \$669.00**



# UltraProbe? 550 & 2000

## Ultrasonic Leak Detection & Mechanical Inspection

*-so sensitive it can hear the human eye blink.*

Designed for ease of use, it often takes no more than 15 minutes to become competent in testing with the ULTRAPROBE. Fast accurate diagnosis through the ULTRAPROBE system will dramatically reduce unplanned downtime and shorten planned outage time.



The ULTRAPROBE heterodynes ultrasound to the audible range providing accurate sound reproduction.

Ultraprobe's versatility makes it ideally suited to work with any plant program:

- ? Predictive maintenance (PDM)
- ? Energy Conservation
- ? Safety
- ? Quality Assurance (QA/QC)
- ? Total Productive Maintenance (TPM)
- ? Process Safety Management (PSM)

Ultraprobe provides data acquisition through three modes:

- ? Auditory Channels (via an acoustically isolating headset)
- ? Analog Meter
- ? Demodulated Signal for vibration data collectors and FFT's